

KUBIK Interface USB Troubleshooter

To be applied if automatic installation fails on Windows XP version

This notice refers to the USB-COM bridge embedded on the KUBIK interface

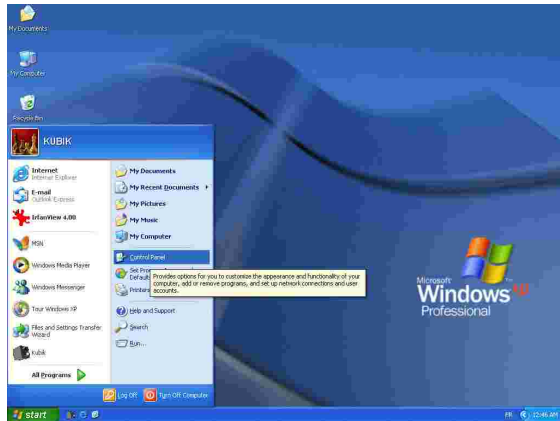


Figure 1

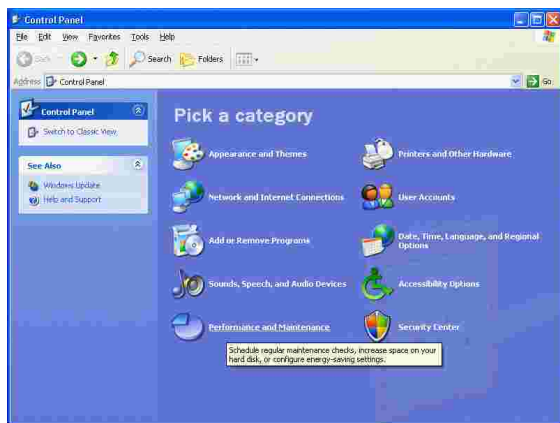


Figure 02

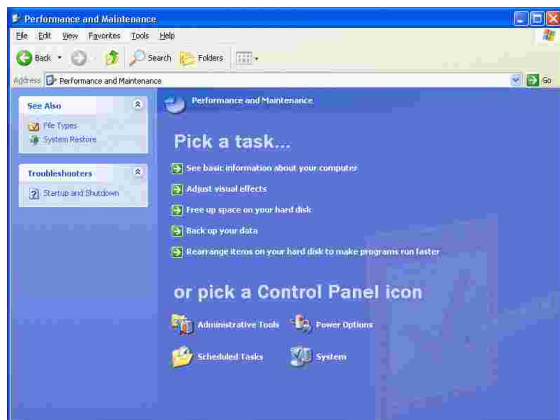


Figure 03

Manual assignment of the COM Port

Please make sure Kubik USB interface is installed and connected.

Winder must be connected to computer and operating.

During the automatic driver configuration the "KUBIK-USB" program installer assigns automatically one communication Port (COMn) to the KUBIK interface

If the allocated port does not match the assigned one then it is necessary to manually replace the COM port number on the "KUBIK-USB" interface

Follow the fig's sequence in order to determine which PORT is assigned on the computer

>> **Start > Control Panel**

>> **select Performance and Maintenance
OR go directly to figure 03**

>> **select System**



Figure 04

>> select **Hardware** tag



Figure 05

>> click on **Device Manager**

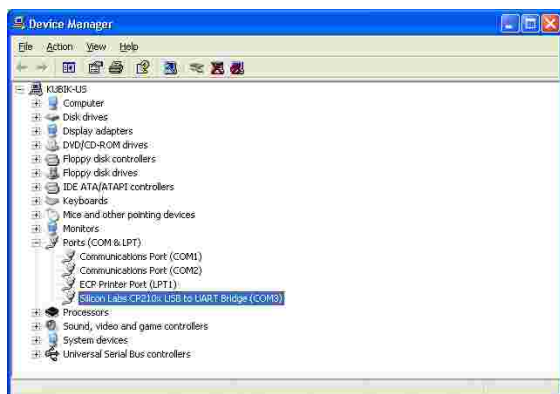


Figure 06

>> click on **Ports (COM & LPT)**
In order to deploy the ports list

The following port should appear :
"Silicon Labs CP210x USB to UART Bridge (COM n)"
!!Please, note the number "n" of the assigned COM (for example "COM4", "COM3",...)
You will manually insert this number on the main kubik screen

>> click on **"Silicon Labs CP210x..."**
In order to open the properties of this port

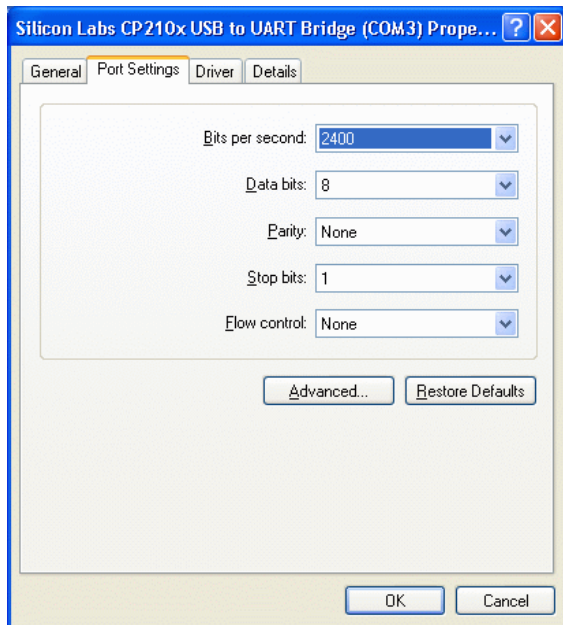


Figure 07

>> Set all of these values

Bits per second: **2400**
 Data bits: **8**
 Parity: **None**
 Stop bits: **1**
 Flow Control: **None**

Confirm these values and quit all the previous windows

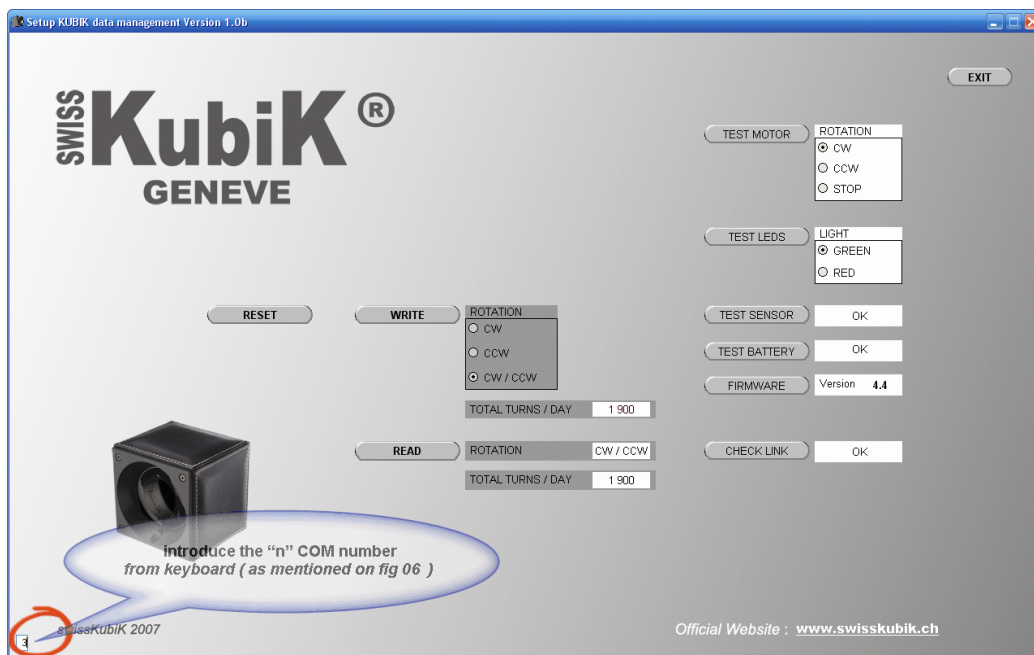


Figure 08

Finally introduce the “n” COM number (for example “COM4”, “COM3”,...)
 from keyboard (As mentioned on fig 06)
 At the small case in the left bottom corner of KUBIK-USB splash screen

All settings will be saved on the computer and no further handling needed for this application